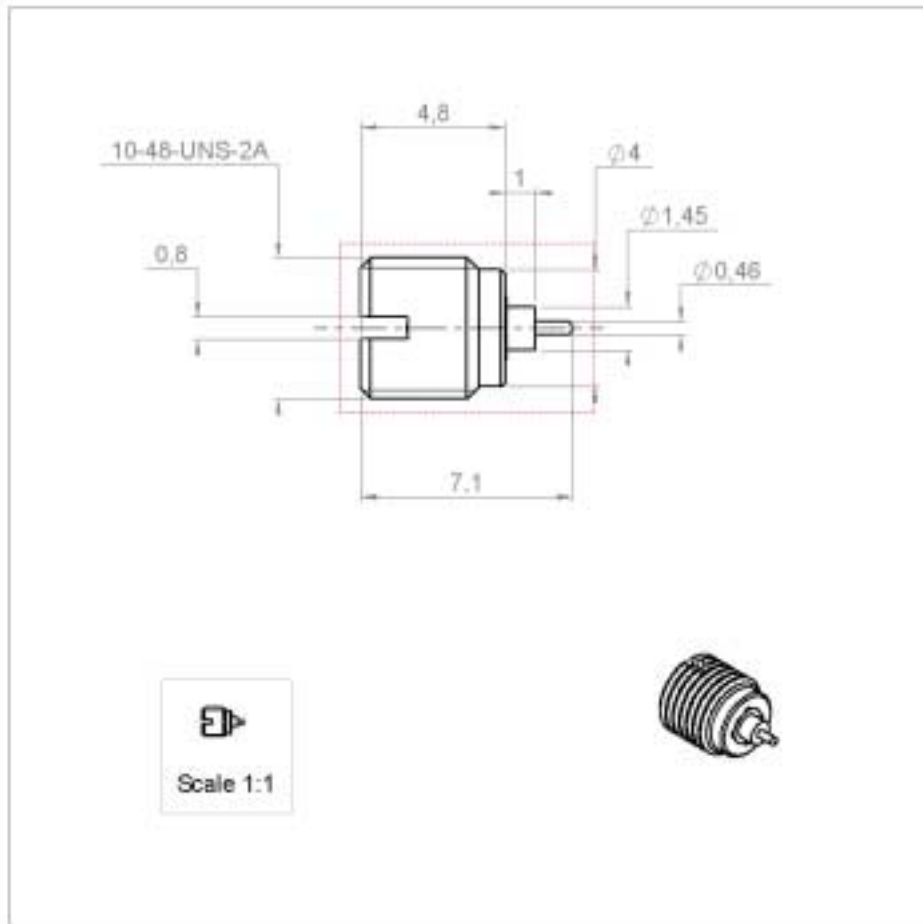


THREAD-IN MALE RECEPTACLE SMOOTH BORE

R222.561.701

Series : SMP



All dimensions are in mm.



COMPONENTS	MATERIALS	PLATINGS (µm)
BODY	STAINLESS STEEL	PASSIVATED .
CENTER CONTACT	BERYLLIUM COPPER	GOLD 1.27 OVER NICKEL 1.27
OUTER CONTACT		
INSULATOR	PTFE	
GASKET		
OTHERS PARTS		
-	-	-
-	-	-

Issue : 0529 B

In the effort to improve our products, we reserve the right to make changes judged to be necessary.



THREAD-IN MALE RECEPTACLE SMOOTH BORE

R222.561.701

Series : SMP

PACKAGING

SPECIFICATION

Standard	Unit	Other
100	'W' option	Contact us

ELECTRICAL CHARACTERISTICS

ENVIRONMENTAL

Impedance		50 Ω
Frequency		0-12 GHz
VSWR	1.3 +	0.000 x F(GHz) Maxi
Insertion loss		0.12 √F(GHz) dB Maxi
RF leakage	- (NA - F(GHz)) dB Maxi
Voltage rating		335 Veff Maxi
Dielectric withstanding voltage		500 Veff mini
Insulation resistance		5000 MΩ mini

Operating temperature	-65/+165 ° C
Hermetic seal	Atm.cm3/s
Panel leakage	NA

OTHERS CHARACTERISTICS

Assembly instruction

Others :

MECHANICAL CHARACTERISTICS

Center contact retention		
Axial force – Mating end		6.8 N mini
Axial force – Opposite end		6.8 N mini
Torque		NA N.cm mini
Recommended torque		
Mating		NA N.cm
Panel nut		90 N.cm
Mating life	→	1000 Cycles mini
Weight	→	0.399 g

Issue : 0529 B

In the effort to improve our products, we reserve the right to make changes judged to be necessary.



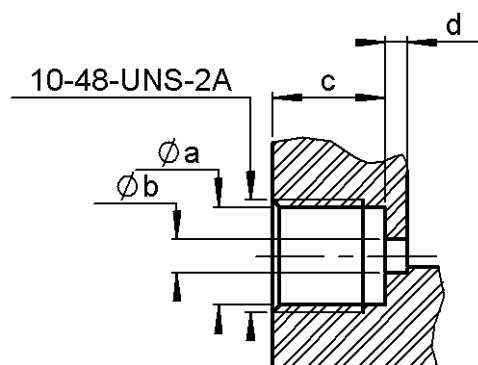
THREAD-IN MALE RECEPTACLE SMOOTH BORE

R222.561.701

Series : SMP

**ADDITIONAL INFORMATIONS
MOUNTING AND REPLEACEMENT INSTRUCTIONS**

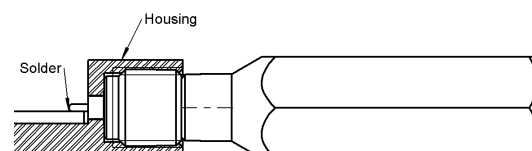
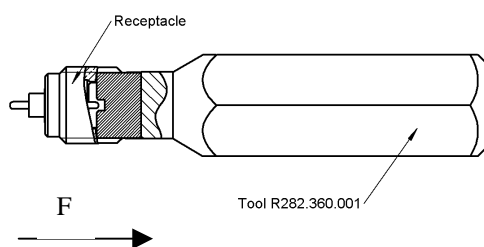
Panel mounting hole



a	4,32
b	1,45 - 1,50
c	4,95
d	1,00

1. Connector must be screwed or unscrewed with adapted torque driver R282.339.001 (recommanded coupling torque : 90 Ncm) Screx driver : R282.360.001
2. Slide on the connector in F direction until it stops against the tool.

3. Screw the whole into the housing until activation of the torque driver.
4. Withdraw the tool and solder the center contact



Issue : 0529 B

In the effort to improve our products, we reserve the right to make changes judged to be necessary.

